

**This unit offers 1022 sq.ft. of apartment comfort. Each one of the two bedrooms include a self contained bathroom. The living room/dining room area is unusually spacious and the floor plan affords the opportunity to share accomodation and yet has the privacy of an individual bedroom and bathroom. Silver View Estates offers amenities that reflect sophistication and comfort.**

### YOUR MONTHLY RENTAL BUDGET CALCULATION

Building Address; \_\_\_\_\_

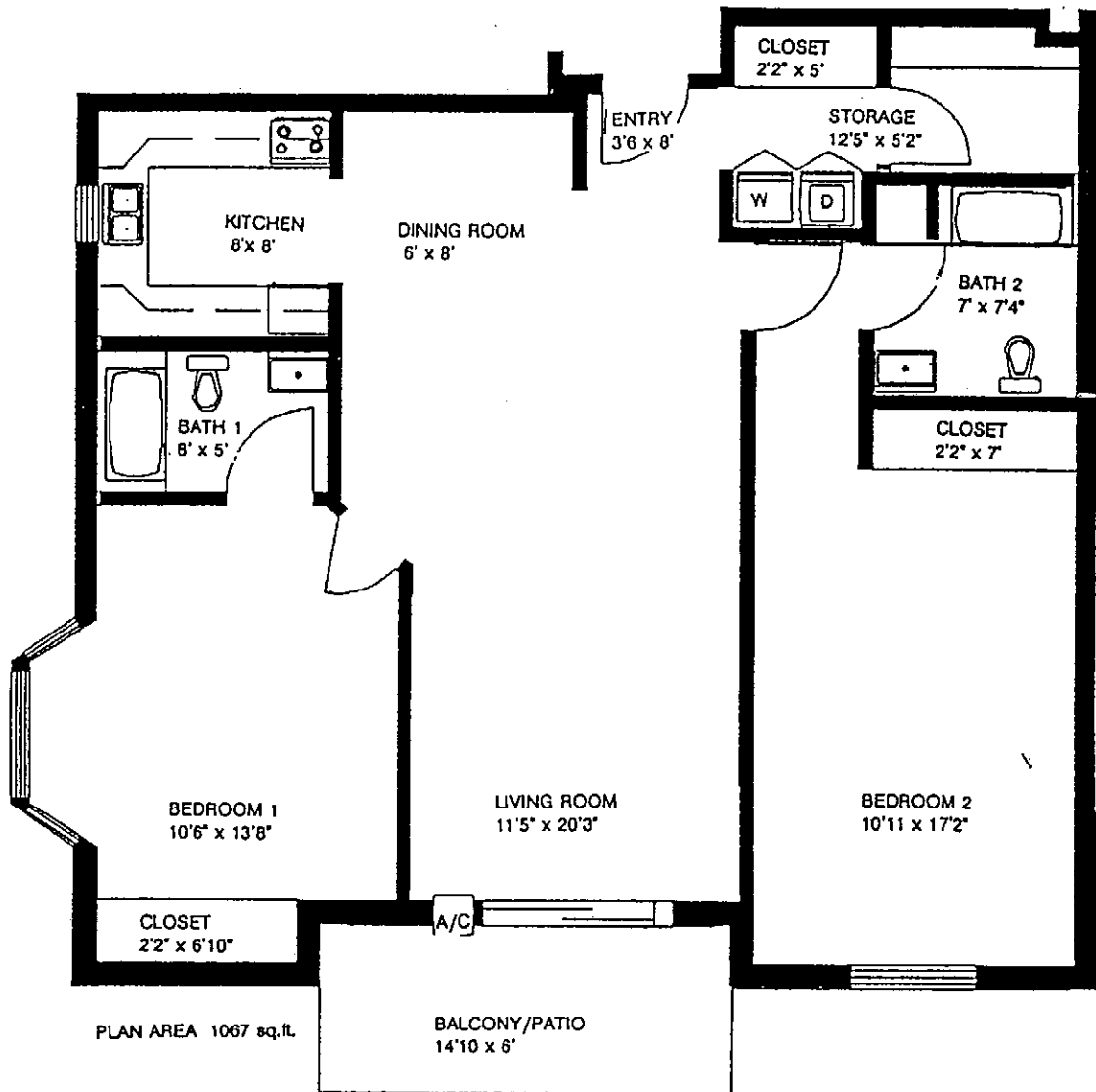
Suite No; \_\_\_\_\_

Montly Rent; \_\_\_\_\_

Parking; \_\_\_\_\_

Utilities; \_\_\_\_\_

Total; \_\_\_\_\_



**Floor plan "C"** is the largest unit with 1067 sq.ft. The 2 spacious bedrooms each have their own self contained bathroom facility, and the oversized living room/dinning room area enhances the home like ambience. A bay window is an attractive feature in one bedroom. **Silver View Estates** offers amenities that reflect sophistication and comfort.

### YOUR MONTLY RENTAL BUDGET CALCULATION

Building Address; \_\_\_\_\_

Suite No; \_\_\_\_\_

Montly Rent; \_\_\_\_\_

Parking; \_\_\_\_\_

Utilities; \_\_\_\_\_

Total; \_\_\_\_\_